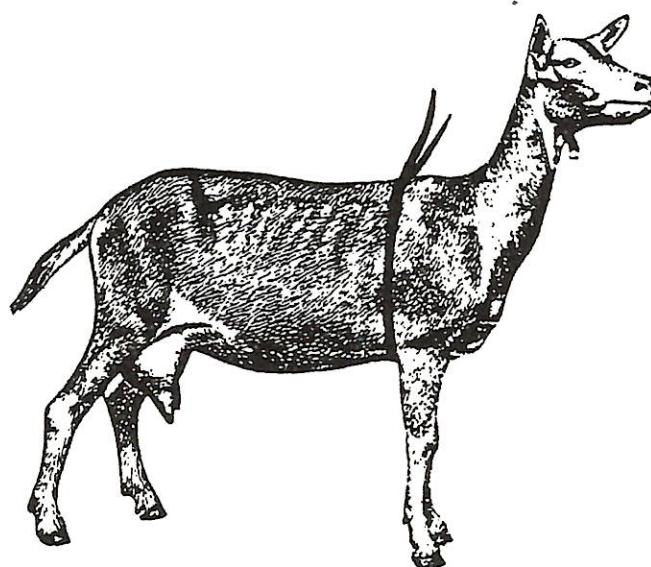


- 8) To determine the weight of a goat, measure the goat around the heart girth. Pull the tape tightly.



#### WEIGHT CHART

Inches	Centimetres	Pounds	Kg.	Inches	Centimetres	Pounds	Kg.
10- <sup>1</sup> / <sub>4</sub>	27.3	5	2.27	26- <sup>1</sup> / <sub>4</sub>	66.7	63	28.57
11- <sup>1</sup> / <sub>4</sub>	28.6	5- <sup>1</sup> / <sub>2</sub>	2.49	26- <sup>3</sup> / <sub>4</sub>	67.9	66	29.93
11- <sup>3</sup> / <sub>4</sub>	29.9	6	2.73	27- <sup>1</sup> / <sub>4</sub>	69.2	69	31.29
12- <sup>1</sup> / <sub>4</sub>	31.1	6- <sup>1</sup> / <sub>2</sub>	2.95	27- <sup>3</sup> / <sub>4</sub>	70.5	72	32.65
12- <sup>3</sup> / <sub>4</sub>	32.4	7	3.17	28- <sup>1</sup> / <sub>4</sub>	71.7	75	34.01
13- <sup>1</sup> / <sub>4</sub>	33.7	8	3.63	28- <sup>3</sup> / <sub>4</sub>	73.0	78	35.37
13- <sup>3</sup> / <sub>4</sub>	34.9	9	4.08	29- <sup>1</sup> / <sub>4</sub>	74.3	81	36.73
14- <sup>1</sup> / <sub>4</sub>	36.2	10	4.54	29- <sup>3</sup> / <sub>4</sub>	75.6	84	38.10
14- <sup>3</sup> / <sub>4</sub>	37.5	11	4.99	30- <sup>1</sup> / <sub>4</sub>	76.8	87	39.46
15- <sup>1</sup> / <sub>4</sub>	38.7	12	5.44	30- <sup>3</sup> / <sub>4</sub>	78.0	90	40.82
15- <sup>3</sup> / <sub>4</sub>	40.0	13	5.90				
16- <sup>1</sup> / <sub>4</sub>	41.3	15	6.80	31- <sup>1</sup> / <sub>4</sub>	79.4	93	42.18
16- <sup>3</sup> / <sub>4</sub>	42.7	17	7.71	31- <sup>3</sup> / <sub>4</sub>	80.7	97	44.00
17- <sup>1</sup> / <sub>4</sub>	43.8	19	8.62	32- <sup>1</sup> / <sub>4</sub>	81.9	101	45.80
17- <sup>3</sup> / <sub>4</sub>	45.1	21	9.52	32- <sup>3</sup> / <sub>4</sub>	83.2	105	47.62
18- <sup>1</sup> / <sub>4</sub>	46.4	23	10.43	33- <sup>1</sup> / <sub>4</sub>	84.5	110	49.89
18- <sup>3</sup> / <sub>4</sub>	47.6	25	11.34	33- <sup>3</sup> / <sub>4</sub>	85.7	115	52.15
19- <sup>1</sup> / <sub>4</sub>	48.9	27	12.24	34- <sup>1</sup> / <sub>4</sub>	87.0	120	54.42
19- <sup>3</sup> / <sub>4</sub>	50.2	29	13.15	34- <sup>3</sup> / <sub>4</sub>	88.3	125	56.69
20- <sup>1</sup> / <sub>4</sub>	51.4	31	14.06	35- <sup>1</sup> / <sub>4</sub>	89.5	130	58.96
20- <sup>3</sup> / <sub>4</sub>	52.7	33	14.97	35- <sup>3</sup> / <sub>4</sub>	90.8	135	61.22
21- <sup>1</sup> / <sub>4</sub>	53.9	35	15.87				
21- <sup>3</sup> / <sub>4</sub>	55.3	37	16.78	36- <sup>1</sup> / <sub>4</sub>	92.1	140	63.49
22- <sup>1</sup> / <sub>4</sub>	56.5	39	17.69	36- <sup>3</sup> / <sub>4</sub>	93.4	145	65.76
22- <sup>3</sup> / <sub>4</sub>	57.8	42	19.05	37- <sup>1</sup> / <sub>4</sub>	94.6	150	68.08
23- <sup>1</sup> / <sub>4</sub>	59.1	45	20.41	37- <sup>3</sup> / <sub>4</sub>	95.9	155	70.29
23- <sup>3</sup> / <sub>4</sub>	60.3	48	21.77	38- <sup>1</sup> / <sub>4</sub>	97.2	160	72.56
24- <sup>1</sup> / <sub>4</sub>	61.6	51	23.13	38- <sup>3</sup> / <sub>4</sub>	98.4	165	74.83
24- <sup>3</sup> / <sub>4</sub>	62.9	54	24.49	39- <sup>1</sup> / <sub>4</sub>	99.7	170	77.10
25- <sup>1</sup> / <sub>4</sub>	64.1	57	25.85	39- <sup>3</sup> / <sub>4</sub>	101.0	175	79.37
25- <sup>3</sup> / <sub>4</sub>	65.4	60	27.21	40- <sup>1</sup> / <sub>4</sub>	102.2	180	81.63
				40- <sup>3</sup> / <sub>4</sub>	103.5	185	83.90
				41- <sup>1</sup> / <sub>4</sub>	104.8	190	86.17
				41- <sup>3</sup> / <sub>4</sub>	106.1	195	88.44

Adapted from Ralston Purina Company.